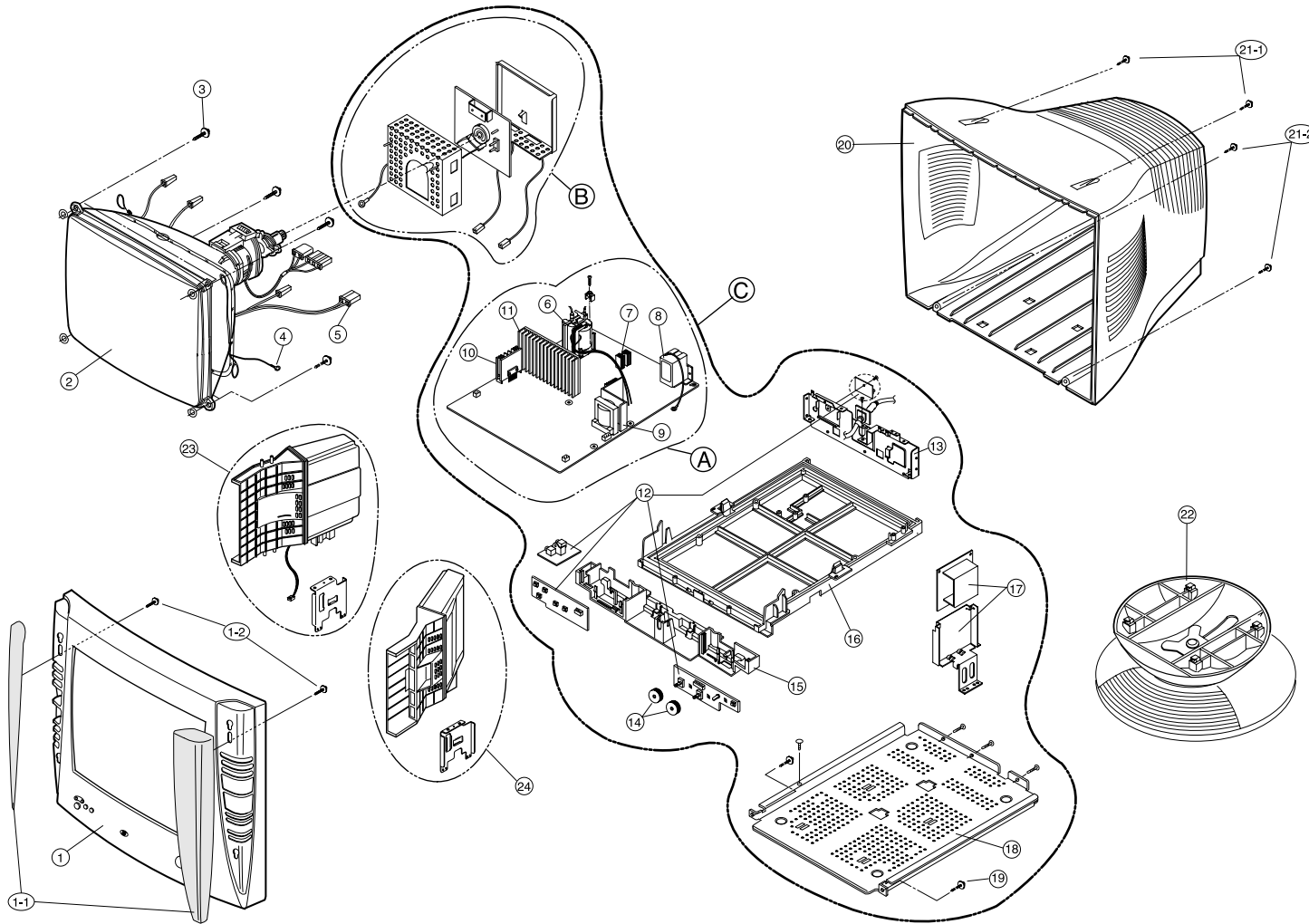


EXPLODED VIEW



EXPLODED VIEW PARTS LIST

Ref. No.	Part No.	Description	Q'ty	Material
1	3091TKC002U	CABINET ASS'Y, LG, S/W 77S (TCO)	1	LGC ABS AF303G UL94-5V
	3091TKC002V	CABINET ASS'Y, LG, S/W 77M (MPR-II)	1	LGC ABS AF303S UL94-V0
1-1	3551TKS012D	COVER ASS'Y, GRILLE (R/L) (TCO-95)	1	LGC ABS AF303S UL94-V0
	3551TKS012C	COVER ASS'Y, GRILLE (R/L) (MPR-II)	1	LGC ABS AF303S UL94-V0
1-2	332-102D	SCREW, PTP+4x14 (MSWR/FZMY)	2	
2	2423GC0B91V	CDT, M41LFQ913x46NLHD (TCO)	1	
	2423GC0B89Z	CDT, M41LFQ803x46NLAA (MPR-II)	1	
3	339-002H	SCREW, PHP+5x20+GW18	4	
4	6868T17003C	CDT EARTH	1	
5	6140TC3001A	DEGAUSSING COIL	1	
6	6174Z-1012B	FBT	1	AL (t=2.0)
7	407-S29H	PLATE, HEAT SINK FOR Q719	1	
8	6200TJB001D	FILTER, AC SOCKET	1	AL (t=2.0)
9	407-T73D	PLATE, HEAT SINK FOR IC901	1	AL
10	407-T98M	PLATE, HEAT SINK FOR IC601	1	AL
11	4920TKC003N	COMPRESS, HEAT SINK FOR D704, Q708, Q706	1	
12	6871TST124B	PCB ASS'Y, (CONTROL) SUB TOTAL (TCO-95)	1	
	6871TST124C	PCB ASS'Y, (CONTROL) SUB TOTAL (MPR-II)	1	
13	4810TKK059A	BRACKET, SIGNAL	1	
14	4940TKC003B	KNOB, CONTROL ROTARY	2	LGC ABS AF303S UL94-V0
15	4810TKV003B	BRACKET, VOLUME (TCO-95)	1	LGC ABS AF303S UL94-V0
	4810TKV003A	BRACKET, VOLUME (MPR-II)	1	LGC ABS AF303S UL94-V0
16	4810TKM004C	BRACKET, MAIN (TCO-95)	1	LGC ABS AF303S UL94-V0
	4810TKM004B	BRACKET, MAIN (MPR-II)	1	LGC ABS AF303S UL94-V0
17	6871TST126B	PCB ASS'Y, AUDIO (TCO-95)	1	
	6871TST126C	PCB ASS'Y, AUDIO (MPR-II)	1	
18	340-714B	BRACKET, BOTTOM SHIELD	1	SBHG1-A (t=1.0)
19	332-102F	SCREW, PTP+4x20	2	
20	3809TKC001L	BACK COVER ASS'Y (TCO-95)	1	LGC ABS AF303G UL94-5V
	3809TKC001K	BACK COVER ASS'Y (MPR-II)	1	LGC ABS AF303S UL94-V0
21-1	332-102H	SCREW, PTP+4x40	2	
21-2	332-102F	SCREW, PTP+4x20	2	
22	3043TKK004G	TILT SWIVEL ASS'Y	1	LGC HIPS 60HR UL94-HB
23	3551TKS014B	SPEAKER ASS'Y (LEFT) (TCO-95)	1	
	3551TKS014A	SPEAKER ASS'Y (LEFT) (MPR-II)	1	
24	3551TKS013B	SPEAKER ASS'Y (RIGHT) (TCO-95)	1	
	3551TKS013A	SPEAKER ASS'Y (RIGHT) (MPR-II)	1	
A	6871TMT121B	PCB ASS'Y, MAIN TOTAL (TCO-95)	1	
	6871TMT121C	PCB ASS'Y, MAIN TOTAL (MPR-II)	1	
B	6871TVT116B	PCB ASS'Y, VIDEO TOTAL	1	
C	3141TZ2045B	CHASSIS ASS'Y, MAIN TOTAL (TCO-95)	1	
	3141TZ2045C	CHASSIS ASS'Y, MAIN TOTAL (MPR-II)	1	